



LUND UNIVERSITY

Evaluating the effect of flowering age and forest structure on pollen productivity estimates

Matthias, Isabelle; Nielsen, Anne Birgitte; Giesecke, Thomas

Published in:
Vegetation History and Archaeobotany

DOI:
[10.1007/s00334-012-0373-z](https://doi.org/10.1007/s00334-012-0373-z)

Published: 2012-01-01

[Link to publication](#)

Citation for published version (APA):

Matthias, I., Nielsen, A. B., & Giesecke, T. (2012). Evaluating the effect of flowering age and forest structure on pollen productivity estimates. *Vegetation History and Archaeobotany*, 21(6), 471-484. DOI: 10.1007/s00334-012-0373-z

General rights

Copyright and moral rights for the publications made accessible in the public portal are retained by the authors and/or other copyright owners and it is a condition of accessing publications that users recognise and abide by the legal requirements associated with these rights.

- Users may download and print one copy of any publication from the public portal for the purpose of private study or research.
- You may not further distribute the material or use it for any profit-making activity or commercial gain
- You may freely distribute the URL identifying the publication in the public portal

LUND UNIVERSITY

PO Box 117
221 00 Lund
+46 46-222 00 00

Take down policy

If you believe that this document breaches copyright please contact us providing details, and we will remove access to the work immediately and investigate your claim.

Download date: 19. Jul. 2018

Evaluating the effect of flowering age and forest structure on pollen productivity estimates

Isabelle Matthias · Anne Birgitte Nielsen ·
Thomas Giesecke

Received: 10 March 2012 / Accepted: 20 June 2012 / Published online: 10 October 2012
© The Author(s) 2012. This article is published with open access at Springerlink.com

Abstract Pollen productivity estimates (PPEs) are indispensable prerequisites for quantitative vegetation reconstructions. Estimates from different European regions show a large variability and it is uncertain whether this reflects regional differences in climate and soil or is brought about by different assessments of vegetation abundance. Forests represent a particular problem as they consist of several layers of vegetation and many tree species only start producing pollen after they have attained ages of several decades. Here we used detailed forest inventory data from north-eastern Germany to investigate the effect of flowering age and understory trees on PPEs. Pollen counts were obtained from 49 small to medium sized lakes chosen to represent the different forest types in the region. Surface samples from lakes within a closed forest of *Fagus* yielded disproportionate amounts of *Fagus* pollen, increasing its PPE and the variability of all other estimates. These samples were removed from further analysis but indicate a high trunk-space component that is not considered in the Prentice–Sugita pollen dispersal and deposition model. Results of the restricted dataset show

important differences in PPEs based on the consideration of flowering age and understory position. The effect is largest for slow growing and/or late flowering trees like *Fagus* and *Carpinus* while it is minimal for species that flower early in their development like *Betula* and *Alnus*. The large relevant source area of pollen (RSAP) of 7 km obtained in this study is consistent with the landscape structure of the region.

Keywords Germany · Relevant source area of pollen · Pollen productivity estimates · Forest structure · Flowering age · Surface samples

Introduction

It is an old dream of quaternary palynologists to translate pollen diagrams into quantitative representations of past plant abundance (Davis 2000). This is especially important where pollen analytical results are used by neighboring disciplines like archeology (Gaillard 2007) and vegetation or climate modeling (Miller et al. 2008; Gaillard et al. 2010). Also the influence of land use and abiotic factors on regional vegetation patterns can only be evaluated if it is possible to reduce the effect of differential pollen production and dispersal in vegetation reconstructions (Nielsen et al. 2012). Studies investigating the pollen vegetation relationship have been conducted for several decades and the concept of finding factors for correcting pollen proportions to reflect the vegetation abundance goes back to Davis (1963). However, the non-linearity between pollen and vegetation proportions hampered the application of simple correction factors. The development of the extended R-value (ERV) model was intended to correct for the non-linearity, and allow the estimation of the relative pollen

Communicated by M.-J. Gaillard.

Electronic supplementary material The online version of this article (doi:10.1007/s00334-012-0373-z) contains supplementary material, which is available to authorized users.

I. Matthias (✉) · A. B. Nielsen · T. Giesecke
Department of Palynology and Climate Dynamics,
Albrecht-von-Haller-Institute for Plant Sciences, University of
Göttingen, Untere Karspüle 2, 37073 Göttingen, Germany
e-mail: Isabelle.Matthias@biologie.uni-goettingen.de

A. B. Nielsen
Department of Geology, University of Lund, Sölvegatan 12, 223
62 Lund, Sweden

productivity of different species (Parsons and Prentice 1981; Prentice and Parsons 1983). This approach was combined with knowledge from studies on pollen transport (e.g. Tauber 1965) to develop numerical models that separate the two species-specific components: pollen production and pollen dispersal (Prentice 1985; Sugita 1993, 1994). Using these models, the dispersal and deposition of pollen can be simulated based on the different fall speed of differently shaped pollen types, which can be estimated or measured directly (Eisenhut 1961), provided estimates of relative pollen productivity are available. Over the last decade, continued theoretical development has led to a conceptual framework that realizes the longstanding dream of quantitative vegetation reconstructions (Sugita 2007a, b; Gaillard et al. 2008). Together with the development of user-friendly computer programs (Sugita 2007a, b; Bunting and Middleton 2005), this has given the impulse for many palynologists to work towards quantitative reconstructions. As mentioned before, pollen productivity estimates (PPEs) are a very important component of these models, but estimating the relative (or absolute) production of pollen of different plant species remains a challenge, as many different factors influence the results (Broström et al. 2008). Moreover, each study addressing the pollen-vegetation relationship to obtain PPEs provides new information to test the models and theoretical concepts of pollen transport and deposition, highlighting potential factors influencing the calculation of PPEs and adding confidence to future reconstructions. Recently a number of these studies have been carried out in Europe: e.g. Norway (Hjelle 1998), Sweden (Sugita et al. 1999; Broström et al. 2004; Von Stedingk et al. 2008), Denmark (Nielsen 2004), England (Bunting et al. 2005), Finland (Räsänen et al. 2007), Estonia (Poska et al. 2011), northern Germany (Theuerkauf et al. 2012), and the Czech Republic (Abraham and Kozáková 2012) as well as for the Swiss Jura (Mazier et al. 2008) and the Swiss Plateau (Soepboer et al. 2007). Initial comparisons of different regional studies revealed large differences in estimated PPEs, which may be due to real differences in pollen production, brought about by regionally different climate or soils, but could also stem from methodological differences (Broström et al. 2008). The influence of vegetation survey methods on PPEs have been shown on the small scale for heathland vegetation in Norway (Bunting and Hjelle 2010), but have so far not been investigated for different assessments of forest vegetation on a landscape scale.

Forests are multi-layered and trees require a number of years of growth before they start to produce flowers and shed pollen. While the former factor will influence the assessment of vegetation cover, the latter affects the vegetation-pollen relationship directly. For example, a 15-year-old plantation of *Pinus* will hardly be the source of much *Pinus* pollen,

while it will appear like a dense forest on an aerial photograph or satellite image. Even when a vegetation survey is conducted on the ground, it is difficult to decide whether or not a *Fagus* tree has reached flowering age.

The forest inventory data in north-eastern Germany are exceptionally detailed and thus permit the assessment of the influence of flowering age and canopy structure on PPEs. Moreover, as the data are available in digitized formats there is little limitation to the area that can be used in the analysis.

The aim of this study is: (i) to contribute to the emerging dataset on regional relative PPEs with a focus on tree species; (ii) to examine what influence flowering age and understory position have on PPEs of the major tree species.

Material and methods

Study area

For this study we have chosen the state of Brandenburg in the eastern part of Germany, because it has a large number of lakes and different forest types (Fig. 1) for which detailed inventory data are available. The maximum limit of the Scandinavian ice sheet runs through Brandenburg in a NW to SE direction and this study was confined to the glaciated part with abundant lakes. The area is characterized by series of ground and terminal moraines and outwash plains with different soil substrates (Liedtke and Marcinek 2002). Climatically, Brandenburg is situated between the oceanic climate of Western Europe and the continental climate further east. Precipitation ranges between 450 and 720 mm, with the driest areas in the southeast (Linke et al. 2010). The state of Brandenburg has a forest cover of 37 % (1.09 million ha) of which pine forests constitute 70 % and mixed forests about 11 % (Engel 2010). The agriculturally used area represents 45 % (1.32 million ha) consisting of 78.3 % arable land and 21.3 % pastures (MLUV 2009).

Sample collection and preparation

The depositional environment has an influence on the pollen composition (Giesecke and Fontana 2008; Pardoe et al. 2010) and when studying the pollen-vegetation relationship it is therefore important to standardize the size and type of sampling site as much as possible to reduce this variability. We aimed at sampling small lakes with a single, simple basin with as small a peat margin as possible and without permanent inflow. Lakes that were deeper in proportion to the lake size were preferred, to avoid lakes with a high sediment redeposition (Giesecke and Fontana 2008). The estimation of pollen productivity requires samples from sites situated within different vegetation

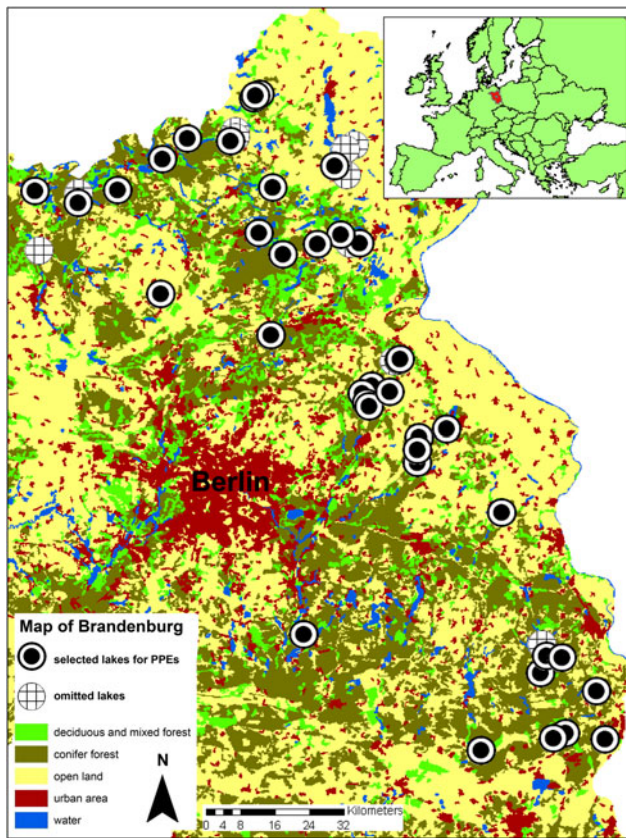


Fig. 1 Vegetation map of Brandenburg, based on CORINE Land Cover 2000 (Umweltbundesamt, DLR-DFD 2004) with the study sites. Inset: map of Europe showing the state of Brandenburg, where the study area is situated

types so that abundance gradients for different taxa can be obtained. In order to achieve this, the constraint of uniform lake size had to be relaxed. Potential lakes were selected from topographical maps, aerial and satellite photographs and their suitability was assessed in the field. In this way a total of 49 lakes ranging between 0.5 and 32 ha were selected and sampled (Table 1).

Sampling was carried out during the spring and summer of 2009 using a HON-Kajak sediment corer (Renberg 1991) with a 10 cm diameter. The short cores obtained were sampled in the field at 1 cm intervals beginning at the sediment water interface (or shortly above it where the interface was diffuse). Samples were stored in small plastic bags at 4 °C until processing.

In the lab a subsample of 1 cm³ was taken from the uppermost sample of each short core using a syringe. In a few cases from cores with a diffuse sediment–water interface this sample yielded a very low pollen concentration and here the second sample in the short core was also subsampled and processed. The subsamples were processed for pollen analysis following the general procedure described

by Bennett and Willis (2001), without sieving and using a 2 min acetolysis. The sample residues were mounted in glycerol and counted at 400× magnification, while cereals were identified at 1,000× magnification. The pollen was identified using the keys of Beug (2004) and Moore et al. (1991), and the reference collection of the Department of Palynology and Climate Dynamics, Göttingen University. A minimum of 1,000 terrestrial pollen grains were counted in each sample. The pollen sum is defined as the sum of all terrestrial pollen grains.

Vegetation data

Detailed inventories of East German forests started before the 1940s and intensified during the 1960s and 70s. Much of this information has been continually updated and later digitized and collected in forest inventory databases. The states of Brandenburg, Mecklenburg-Vorpommern and Thuringia have collected this information with a standardized format in the database “Datenspeicher Wald” (DSW2; <http://www.dsw2.de/index.html>). Most of the forest inventory data for Brandenburg and adjacent parts of Mecklenburg-Vorpommern may be obtained from this database. However, large parts of the forest in Brandenburg are owned by the German Federation and partly administered by a federal agency “Bundesanstalt für Immobilienaufgaben”, who provided the same type of forest inventory data for the immediate study area. For each forest stand, the inventory data contain information on the absolute tree cover, age, and wood volume as well as forest structure differentiated into several layers e.g. superstructure, rejuvenation, understory. These layers were classified into two stories, canopy, and understory. Unlike a bird’s-eye view, as obtained from aerial and satellite images the database yields information on the total ground cover of individual species (Fig. 2). Information about the cover on different types of non-forested vegetation was derived from the biotope and land-use mapping project (CIR-Biotop- und Landnutzungstypenkartierung download: <http://www.mugv.brandenburg.de/cms/detail.php/bb2.c.515599.de>, 2009 version, accessed 1 December 2010). This map was constructed in 1991–1996 and is updated annually. The map was reclassified and generalized so that the resulting units would represent unique combinations of plants that were considered in the PPE calculations. The area of arable fields was assigned to a mixture of crops according to information of yield for the year 2009 (MLUV 2009), assuming an even distribution of cultivation of the different crops in Brandenburg.

All spatial data were combined and handled in ArcGIS 9 (ESRI) and Excel (Microsoft), and the vegetation cover data within a radius of 15 km around each sampling site was extracted in four different ways:

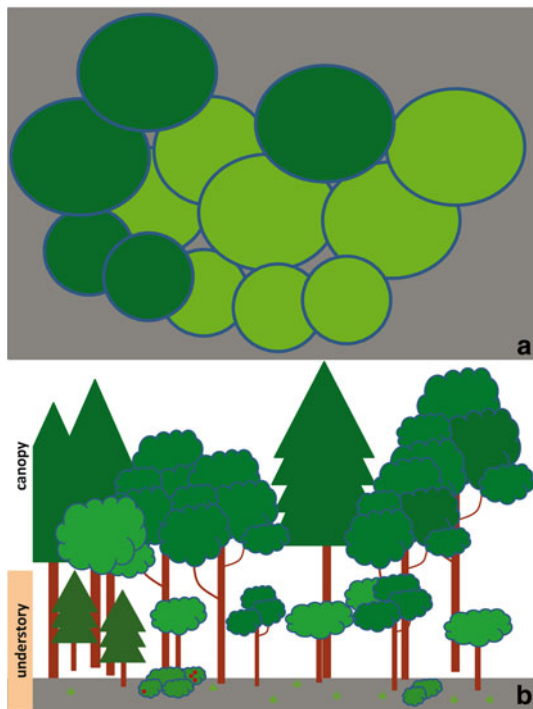


Fig. 2 **a** Example of a forest canopy from above, which is the basis for estimates of tree abundance from aerial photographs and satellite images; **b** a simplification of canopy layers as recognized in the forest inventory data illustrating the classification in canopy and understory that was used here

1. All forest inventory data were included (allFID).
2. Forest data were included if the flowering age of the different trees and shrubs had been reached (allFIDage).
3. Only data from the canopy layer were included, while information on understory trees was excluded (canopyFID).
4. Only data from the canopy layer were included, and only if the flowering age of the different taxa was reached (canopyFIDage). The information on the flowering age for the trees was obtained from the literature (Table 2).

ERV analysis

The four different sets of assembled vegetation information for a radius of 15 km around the lakes were compared to pollen percentages in the surface samples. For distance weighting, vegetation data was compiled in 250 m-wide rings for the first km and one km-wide rings from 1 to 15 km distance from the center of the lake. To evaluate the effect of ring width on the results we compiled one test set with 200 m rings over the first 3 km. Calculations of PPEs and the relevant source area of pollen (RSAP) were conducted using the Program ERV-Analysis 1.2.3 (Sugita unpublished). Each of the three different ERV submodels

(Prentice and Parsons 1983; Sugita 1994) were applied using the Ring Source model (Sugita et al. 1999) to distance-weight the vegetation data. Wind speed was set to 3 m/sec and pollen fall speeds were taken from the literature or estimated (Table 2). Lake radii were set to an average radius of 140 m (Nielsen and Sugita 2005; Soepboer et al. 2007). We used *Pinus* as a reference taxon as it is abundant in the vegetation and pollen samples from all sites and represents mainly the single native species, *Pinus sylvestris*. Initial analysis of the full dataset showed that model performance was improved by reducing the samples to a subset of 39 lakes, omitting lakes where *Fagus* exceeded a cover of 5 ha within a radius of 250 m from the center of the lake.

We calculated PPEs for 16 taxa (Table 2), of which one is a group of taxa. This group is labeled “wild herbs” and consists of the uncultivated terrestrial herb pollen, including e.g. Poaceae, *Plantago lanceolata*, *Rumex acetosa*, *R. acetosella*, and Chenopodiaceae, with Poaceae being the most abundant. The fall speed for the wild herbs was estimated, using the fall speed of the most frequent taxa in this group.

Results

All of the lakes sampled are surrounded by at least some trees and most are adjacent to or within closed canopy forest, as this is where most detailed vegetation information is available. This close proximity of the lakes to forested land explains the high tree pollen proportions of up to 95 % in the surface samples. It is noteworthy that the amount of tree pollen is above 75 % in all samples, even though the overall tree cover in the state of Brandenburg is only 37 %. The pollen diagram (Fig. 3) presents all 49 sampled lakes along a north–south gradient, illustrating the regional distribution limit of *Fagus*. Regardless of the extra-local abundance of *Fagus* in the region, lakes where the tree dominates the shore of the lake were found to stand out in their abundance of *Fagus* pollen (Fig. 4) and were therefore omitted from further analysis. The restricted dataset contains a good dispersion of pollen abundance for the following taxa: *Alnus* (4–37 %), *Betula* (6–24 %), *Fagus* (0.2–12 %), *Pinus* (17–58 %), *Quercus* (3–19 %), and the wild herbs (3–18 %). Although a maximum of 19 % *Carpinus* pollen is represented in one sample, the pollen type is restricted to few samples. Also pollen of *Fraxinus* (0–4 %), *Populus* (0–1 %), and *Tilia cordata* (0–2 %) only occurs in a small number of samples, while *Picea* (0–4 %) as well as the cereal pollen types occur in many samples with low abundances.

RSAP

For all three ERV submodels, likelihood function scores decrease to a distance of 7 km from the center of the lakes

Table 1 Characteristics of the study sites

No.	Name	Latitude (decimal degrees)	Longitude (decimal degrees)	Size (ha)	Radius (m)	Depth (m)
1	Steinsee	53.31843	13.6226	6.7	146	3.5
2	Petznicksee	53.31551	13.6093	13.1	204	7.3
3	Kleiner Petznicksee	53.31142	13.6018	5.1	127	2
4	Hausseebruch*	53.24517	13.5306	3	98	10.1
5	Tiefer See	53.23517	13.3631	17.2	234	33.7
6	Tiefer Clöwen*	53.23330	13.5311	8.5	165	10.3
7	Poviestsee	53.22387	13.5124	22	265	11.7
8	Kleiner Rathsburgsee*	53.20058	13.9394	3.2	101	6.6
9	Kleiner Lychensee	53.19640	13.2704	8.5	165	13.7
10	Bugsee*	53.19298	13.9100	1.5	69	6
11	Kleiner Trinsee	53.15804	13.8674	1.1	59	5.6
12	Kleiner Zermittensee	53.14401	12.8227	5.8	136	7.3
13	Aalgastsee*	53.13914	13.9050	0.8	51	3.3
14	Weißensee	53.13679	13.1089	5.8	136	8.2
15	Glabatzsee*	53.13607	12.9745	2	80	7.3
16	Temnitzsee	53.12171	13.6462	9.9	178	6.7
17	Plötzensee	53.11484	12.9704	5.7	135	8.8
18	Kleiner Gollinsee	53.02887	13.5882	3.2	101	3.3
19	Teufelssee*	53.01995	12.8263	4.8	124	12
20	Heiliger See	53.01560	13.8720	9.1	170	10.8
21	Dovinsee	52.99795	13.7881	20.8	257	7
22	Schwarzersee*	52.99400	13.9030	3.3	103	4.7
23	Kleiner Plunzsee	52.99271	13.9359	2.8	94	3.8
24	Runder Köllnsee	52.98064	13.6685	2.7	93	3.9
25	Papensee	52.91403	13.2390	5.9	137	8.3
26	Buckowsee	52.81319	13.6087	13.8	210	8.8
27	Schiebelsee	52.74569	14.0463	0.5	40	4.1
28	Sonnenburger Fenn	52.74459	14.0419	2.3	86	3.5
29	Baasee*	52.74333	14.0258	2.2	84	3.6
30	Röthsee	52.69485	13.9429	3.3	103	2.7
31	Modderpfuhl	52.67960	13.9084	1.7	74	3.8
32	Sternebecker See	52.67933	14.0025	7.7	157	10.8
33	Piechensee	52.65964	13.9211	4.5	120	3
34	Blumenthalsee	52.65168	13.9272	8.4	164	4.2
35	Staffsee	52.59436	14.1890	9.6	175	3.8
36	Kleiner Tornowsee	52.57950	14.0930	3.8	110	10
37	Schwarzer See	52.55541	14.0835	7.1	150	4.3
38	Kesselsee	52.52920	14.0796	2.7	93	7.8
39	Kessel See	52.41206	14.3562	3.5	106	1.2
40	Karbuschsee	52.18666	13.6543	12.2	197	17.5
41	Kleiner Treppelsee*	52.13257	14.4585	5.4	131	4.5
42	Ziskensee	52.10599	14.4699	2.6	91	4.4
43	Klautzkese	52.09969	14.5223	6.4	143	1.8
44	Rähdensee	52.07074	14.4465	11.8	194	6.3
45	Buchwaldsee	52.02388	14.6300	1.9	78	2.3
46	Kleinsee	51.94195	14.5101	14	211	2
47	Großsee	51.93298	14.4719	31.7	318	8.3
48	Deulowitzer See	51.92377	14.6467	13.9	210	4
49	Teersee	51.91930	14.2263	8	160	3.7

* Lakes with more than 5 ha *Fagus* within a radius of 250 m from the lake centre, omitted from the restricted dataset

Table 2 Pollen fall speed of 16 taxa and the flowering age considered for the tree taxa

Pollen taxa	Fall speed (m/s)	Tree taxa	Flowering age
<i>Alnus</i>	0.021 ^a	<i>Alnus glutinosa</i>	10 ^d
<i>Betula</i>	0.022 ^a	<i>Betula pendula</i>	10 ^d
<i>Carpinus</i>	0.042 ^a	<i>Carpinus betulus</i>	30 ^d
<i>Fagus</i>	0.057 ^b	<i>Fagus sylvatica</i>	50 ^d
<i>Fraxinus</i>	0.022 ^a	<i>Fraxinus excelsior</i>	30 ^d
<i>Larix</i> (and <i>Pseudotsuga</i>)	0.126 ^a	<i>Larix</i>	10 ^c
<i>Picea</i>	0.056 ^a	<i>Picea</i>	40 ^f
<i>Pinus</i>	0.031 ^a	<i>Pinus</i>	20 ^{f,g,**}
<i>Populus</i>	0.025 ^a	<i>Populus alba</i>	20 ^d
<i>Quercus</i>	0.035 ^a	<i>Pseudotsuga</i>	30 ^h
<i>Tilia</i>	0.032 ^a	<i>Quercus robur</i>	30 ^d
<i>Avena</i> -type	0.078 ^c	<i>Tilia cordata</i>	20 ^c
<i>Hordeum</i> -type	0.06 [*]		
<i>Secale</i>	0.06 ^b		
<i>Triticum</i> -type	0.078 ^c		
wild herbs	0.03425 [*]		

^a Eisenhut (1961)^b Gregory (1973)^c Cerealia in Soepboer et al. 2007^d Schütt et al. (2006)^e Haller and Fickler (1955)^f Rispen (2003)^g Schröck (1949)^h Stinglwagner et al. (2005)^{*} Estimated fall speed, ^{**} average value

(Fig. 5). Scores for submodel 3 show a small dip at this distance, while submodels 1 and 2 have reached the asymptote at this point. While Fig. 5 is based on the inclusion of all trees that have reached their flowering age, the results for the different datasets yield similar trends indicating the RSAP at 7 km from the centers of the lakes. We tested if this result for the RSAP was influenced by compiling the vegetation data over 1 km wide rings, but did not find narrower rings to have any influence on the result.

Pollen-vegetation relationships

Scatter-plots depicting the ERV-model adjusted pollen-vegetation relationships (Fig. 6) give some indication of

the reliability of calculated PPEs. The patterns of points around the regression line differ little between the four sets of forest inventory data and therefore only the results based on the dataset allFIDage are shown for the three ERV submodels. As with the likelihood function scores, the patterns are most similar between ERV submodels 1 and 2. The patterns differ most between the three submodels for the wild herbs with a particularly poor fit for model 3, whereas *Pinus* shows the best fit with this submodel. Most of the more abundant tree species have long gradients and positive relationships between pollen and vegetation data. The trend is especially clear for the reference taxon *Pinus*, but also *Alnus*, *Carpinus*, *Fraxinus*, *Larix/Pseudotsuga*, and *Quercus* show similarly good fits for all ERV submodels. The pollen-vegetation relationship for *Carpinus* and *Fraxinus* is captured by few samples while the trend for *Tilia cordata* is dominated by the elevated pollen and plant abundance at a single lake. The pollen-vegetation relationship is weak for *Betula*, *Picea*, and *Populus* and poor for most cereals and wild herbs.

Vegetation cover

When sampling the lakes, the vegetation immediately around each lake was noted in the field and for random sites later compared with the information from the forest inventory data. There was a good agreement, often down to small patches or groups of trees. In effect considering only those trees that have reached flowering age, or that occur in the canopy, means reducing the amount of vegetation cover. This is shown in Table 3 for tree species within 7 km around the lakes (the RSAP). *Pinus* dominates the area around the sampled lakes with an average cover of about 30 % (Table 3), but with a high variability between the different lakes, as indicated by a standard deviation (s.d.) of more than 50 %. *Pinus* cover is little affected by omitting trees below average flowering age or those occurring in the understory. The next most abundant trees are *Fagus* and *Quercus*, covering on average 6 and 4 % of the RSAP, respectively. Their abundance is much affected by omitting trees below flowering age and *Fagus* is especially reduced when removing the understory trees. *Betula*, *Picea*, and *Larix/Pseudotsuga* have average abundances of about 2 %. While none of these constraints greatly affected *Betula*, the constraint of flowering age reduces the abundance of *Picea* and, to a lesser extent, *Larix/Pseudotsuga*. *Alnus*, which is often found at the shore of the sampled lakes only reaches an average cover of 0.9 % and age or canopy structure, have almost no influence. *Carpinus*, *Fraxinus*, *Populus*, and *Tilia cordata* occur on average with less than 1 % cover and the removal of their understory occurrences reduces the abundance of *Carpinus* and *T. cordata* by half, while *Populus* is not affected at all.

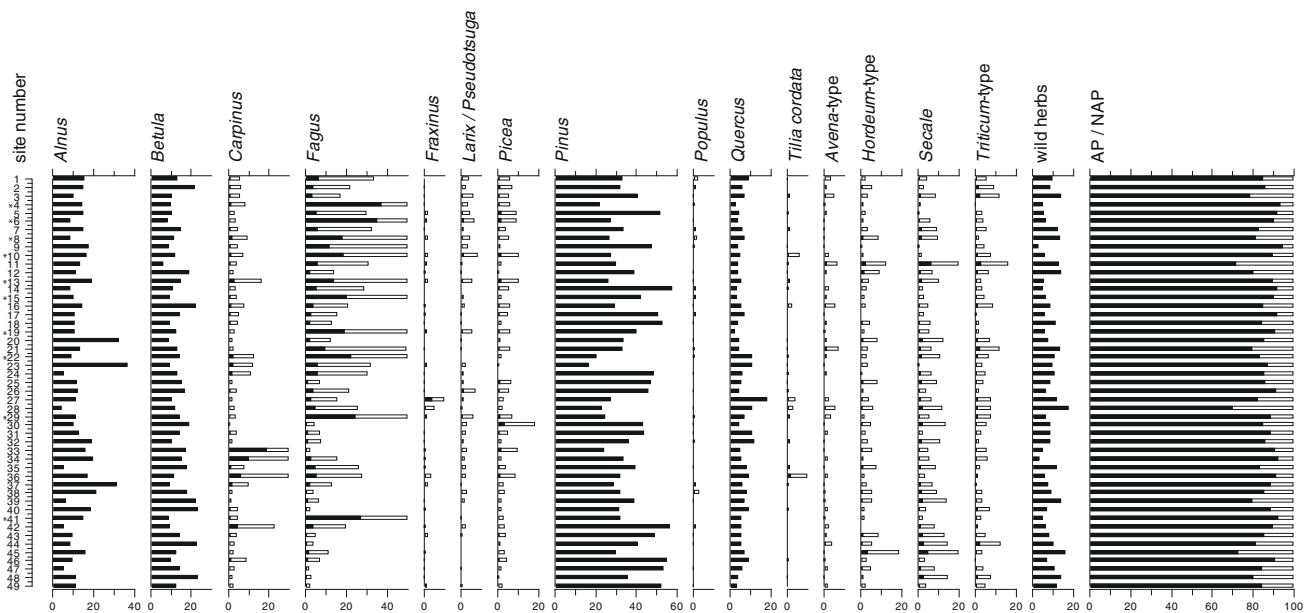


Fig. 3 Percentage pollen diagram of selected types for all surface samples, based on the sum of all terrestrial pollen. The samples are ordered from north to south; $\times 5$ exaggeration is indicated by hollow bars. Asterisks mark the omitted lakes

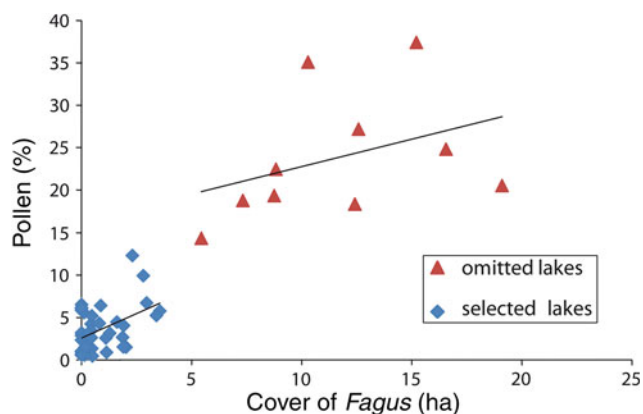


Fig. 4 Scatter-plot of the cover of *Fagus* trees (ha) within a radius of 250 m from the lake center vs. the percentage of *Fagus* pollen in the surface samples of all study sites. Trend-lines are linear regressions for the two sets. Lakes within closed *Fagus* forests yielded disproportionately higher amounts of *Fagus* pollen and were therefore excluded from further analysis

Reference taxon and the representation of herb pollen

As calculation of absolute PPEs on a landscape scale is difficult and requires pollen accumulation rates (Sugita et al. 2010), PPEs are commonly estimated relative to a reference taxon, which needs to be present in the pollen count and vegetation of all samples. A common choice is Poaceae (Broström et al. 2008) as it occurs almost everywhere. Here forest lakes were targeted and the cover of herbaceous vegetation on the forest floor was not assessed. Consequently, vegetation information on Poaceae is incomplete, and probably particularly biased near the lakes.

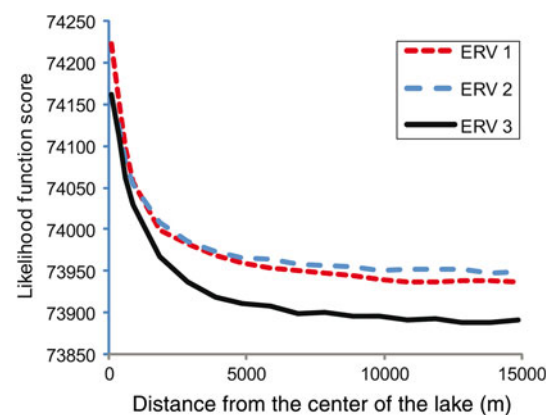


Fig. 5 Likelihood function scores for the ERV submodels 1, 2 and 3, based on the restricted dataset of 39 lakes with an assumed radius of 140 m, considering all trees that have reached their respective flowering age (allFIDage)

Poaceae was therefore not chosen as a reference taxon and not calculated separately (but combined with the other wild herbs in an attempt to minimize this bias). The scatter-plots in Fig. 6 show a poor fit for herbaceous pollen which may reflect the sampling design, where lakes seldom border non-forested areas. As the commonest tree in the study region, *Pinus* fulfilled all requirements of a reference taxon including a good fit between vegetation and pollen data.

PPEs

Taxa that show good fits in the scatter-plots (Fig. 6) also yield similar PPEs in the different ERV submodels

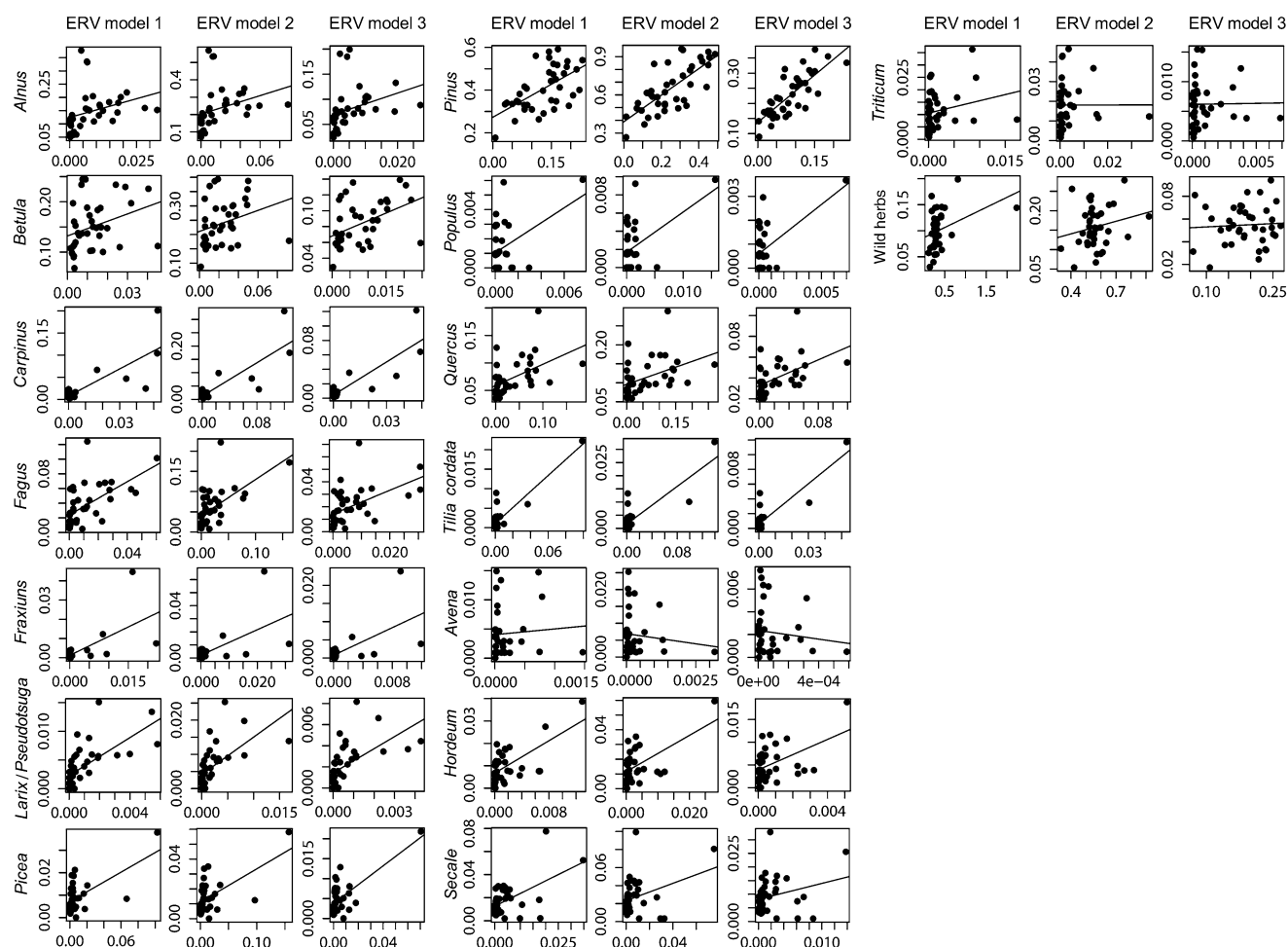


Fig. 6 Scatter-plots of pollen (y-axis) and vegetation (x-axis) data of the 16 selected taxa within the RSAP, based on the dataset considering only trees where the flowering age had been

reached (allFIDage). ERV 1 adjusted vegetation proportion vs. pollen proportion. ERV 2 vegetation proportion vs. adjusted pollen proportion. ERV 3 relative pollen loading vs. absolute vegetation

Table 3 Average cover and s.d. (%) of the tree taxa within the RSAP

	allFID cover \pm s.d.	allFIDage cover \pm s.d.	canopyFID cover \pm s.d.	canopyFIDage cover \pm s.d.
<i>Alnus</i>	0.85 \pm 0.71	0.85 \pm 0.71	0.84 \pm 0.71	0.83 \pm 0.69
<i>Betula</i>	2.07 \pm 1.11	2.05 \pm 1.10	1.92 \pm 1.00	1.89 \pm 0.99
<i>Carpinus</i>	0.74 \pm 0.91	0.64 \pm 0.89	0.34 \pm 0.53	0.33 \pm 0.53
<i>Fagus</i>	6.36 \pm 5.61	4.23 \pm 4.34	2.77 \pm 2.75	2.55 \pm 2.55
<i>Fraxinus</i>	0.13 \pm 0.14	0.10 \pm 0.13	0.10 \pm 0.12	0.09 \pm 0.11
<i>Larix and Pseudotsuga</i>	2.21 \pm 1.31	1.84 \pm 1.19	1.98 \pm 1.24	1.77 \pm 1.17
<i>Picea</i>	2.32 \pm 1.79	1.55 \pm 1.22	1.89 \pm 1.47	1.26 \pm 1.04
<i>Pinus</i>	33.61 \pm 17.79	32.43 \pm 16.87	33.08 \pm 17.25	32.04 \pm 16.57
<i>Populus</i>	0.18 \pm 0.17	0.17 \pm 0.17	0.18 \pm 0.17	0.17 \pm 0.17
<i>Quercus</i>	4.36 \pm 2.76	3.01 \pm 2.08	2.89 \pm 1.93	2.49 \pm 1.84
<i>Tilia cordata</i>	0.39 \pm 0.27	0.25 \pm 0.27	0.16 \pm 0.15	0.14 \pm 0.15

(Table 4). The PPEs were taken at the RSAP (7 km) and vary especially for *Alnus*, *Populus* and all non-arboreal pollen types between different submodels. The four

datasets with differently assessed tree-cover abundance based on flowering age and forest structure affect the PPEs in different directions. Most strongly affected is *Carpinus*,

Table 4 Pollen productivity estimates (\pm s.d.); calculated with the lake dispersal model (Prentice–Sugita-model: Sugita et al. 1999), wind speed of 3 m/s and *Pinus* as reference taxon

Taxon	ERV submodel	allFID PPE \pm s.d.	allFIDage PPE \pm s.d.	canopyFID PPE \pm s.d.	canopyFIDage PPE \pm s.d.
<i>Alnus</i>	ERV 1	4.55 \pm 2.29	3.83 \pm 1.19	4.75 \pm 0.99	4.78 \pm 0.83
	ERV 2	2.64 \pm 0.26	2.25 \pm 0.23	2.65 \pm 0.17	2.5 \pm 0.25
	ERV 3	2.69 \pm 0.31	2.74 \pm 0.22	3.42 \pm 0.27	2.73 \pm 0.29
<i>Betula</i>	ERV 1	2.34 \pm 1.78	1.56 \pm 1.08	2.17 \pm 0.75	1.9 \pm 0.73
	ERV 2	1.62 \pm 0.61	1.4 \pm 0.59	1.26 \pm 0.58	1.72 \pm 0.43
	ERV 3	2.35 \pm 0.31	1.7 \pm 0.34	2.37 \pm 0.34	2.24 \pm 0.3
<i>Carpinus</i>	ERV 1	1.94 \pm 0.16	1.89 \pm 0.17	3.14 \pm 0.24	3.46 \pm 0.31
	ERV 2	1.75 \pm 0.07	1.52 \pm 0.07	2.5 \pm 0.11	2.61 \pm 0.1
	ERV 3	1.56 \pm 0.03	1.67 \pm 0.09	3.2 \pm 0.11	2.94 \pm 0.13
<i>Fagus</i>	ERV 1	1.08 \pm 0.08	1.33 \pm 0.12	1.8 \pm 0.19	1.91 \pm 0.23
	ERV 2	0.93 \pm 0.04	1.01 \pm 0.04	1.64 \pm 0.06	1.39 \pm 0.1
	ERV 3	1.07 \pm 0.05	1.03 \pm 0.08	1.67 \pm 0.15	1.76 \pm 0.11
<i>Fraxinus</i>	ERV 1	0.7 \pm 0.09	1.05 \pm 0.17	0.72 \pm 0.1	1.33 \pm 0.24
	ERV 2	0.73 \pm 0.09	1.25 \pm 0.13	0.84 \pm 0.09	1.16 \pm 0.14
	ERV 3	0.81 \pm 0.1	1.19 \pm 0.12	0.96 \pm 0.11	1.34 \pm 0.15
<i>Larix</i> and <i>Pseudotsuga</i>	ERV 1	1.24 \pm 0.26	1.49 \pm 0.3	1.3 \pm 0.27	1.71 \pm 0.3
	ERV 2	1.89 \pm 0.29	2.04 \pm 0.29	1.41 \pm 0.28	1.89 \pm 0.31
	ERV 3	2.62 \pm 0.35	1.55 \pm 0.32	1.89 \pm 0.35	1.74 \pm 0.34
<i>Picea</i>	ERV 1	0.18 \pm 0.02	0.27 \pm 0.07	0.16 \pm 0.03	0.24 \pm 0.04
	ERV 2	0.15 \pm 0.04	0.24 \pm 0.04	0.2 \pm 0.04	0.22 \pm 0.04
	ERV 3	0.2 \pm 0.04	0.28 \pm 0.05	0.22 \pm 0.04	0.23 \pm 0.04
<i>Populus</i>	ERV 1	0.88 \pm 0.34	0.61 \pm 0.27	0.84 \pm 0.35	0.98 \pm 0.42
	ERV 2	0.51 \pm 0.23	0.47 \pm 0.22	0.47 \pm 0.22	0.55 \pm 0.26
	ERV 3	0.39 \pm 0.19	0.47 \pm 0.22	0.52 \pm 0.24	0.42 \pm 0.21
<i>Quercus</i>	ERV 1	0.28 \pm 0.07	0.4 \pm 0.06	0.45 \pm 0.03	0.41 \pm 0.04
	ERV 2	0.32 \pm 0.05	0.36 \pm 0.03	0.34 \pm 0.05	0.33 \pm 0.05
	ERV 3	0.38 \pm 0.04	0.38 \pm 0.03	0.44 \pm 0.05	0.39 \pm 0.05
<i>Tilia cordata</i>	ERV 1	0.21 \pm 0.05	0.2 \pm 0.06	0.28 \pm 0.04	0.28 \pm 0.05
	ERV 2	0.18 \pm 0.03	0.22 \pm 0.04	0.22 \pm 0.04	0.26 \pm 0.04
	ERV 3	0.22 \pm 0.04	0.26 \pm 0.04	0.26 \pm 0.05	0.28 \pm 0.05
<i>Avena</i> -type	ERV 1	2.38 \pm 2.03	0.24 \pm 1.35	2.03 \pm 2.18	2.17 \pm 2.66
	ERV 2	0.01 \pm 1.42	0.002 \pm 1.36	0.04 \pm 1.47	0.01 \pm 1.48
	ERV 3	0.004 \pm 2	0.01 \pm 1.89	0.02 \pm 2.14	0.07 \pm 2.05
<i>Hordeum</i> -type	ERV 1	1.87 \pm 0.33	1.51 \pm 0.31	1.63 \pm 0.33	2.18 \pm 0.48
	ERV 2	1.16 \pm 0.25	1.13 \pm 0.23	1.11 \pm 0.24	1.17 \pm 0.25
	ERV 3	2 \pm 0.4	1.59 \pm 0.34	1.95 \pm 0.41	1.78 \pm 0.38
<i>Secale</i>	ERV 1	1.1 \pm 0.15	1.22 \pm 0.2	1.22 \pm 0.19	1.17 \pm 0.21
	ERV 2	0.57 \pm 0.12	0.38 \pm 0.1	0.41 \pm 0.11	0.56 \pm 0.12
	ERV 3	0.47 \pm 0.17	0.72 \pm 0.17	0.81 \pm 0.2	0.82 \pm 0.19
<i>Triticum</i> -type	ERV 1	0.72 \pm 0.24	0.78 \pm 0.26	0.85 \pm 0.29	0.8 \pm 0.31
	ERV 2	0.08 \pm 0.18	0.11 \pm 0.17	0.09 \pm 0.18	0.19 \pm 0.2
	ERV 3	0.13 \pm 0.27	0.08 \pm 0.26	0.23 \pm 0.31	0.23 \pm 0.29
Wild herbs	ERV 1	0.05 \pm 0.01	0.04 \pm 0.01	0.05 \pm 0.003	0.04 \pm 0.004
	ERV 2	0.14 \pm 0.01	0.12 \pm 0.01	0.1 \pm 0.01	0.13 \pm 0.01
	ERV 3	0.01 \pm 0.01	0.01 \pm 0.01	0.01 \pm 0.01	0 \pm 0.01

where the relationship is determined by a few sites at which the tree often occurs in the understory. Similarly, *Fagus* shows different values depending on the inclusion of understory trees, while for *Quercus* a large difference is only seen for ERV submodel 1. PPEs for *Carpinus*, *Fagus*,

and *Quercus* increase as their cover abundances are reduced, which is to be expected as fewer trees account for the same proportion of pollen. As the reduction in cover abundance is least for *Alnus* and *Betula* in the different datasets, their relative abundance increases slightly and

there is a decreasing trend in the calculated PPEs for most ERV submodels when understory and/or young trees are excluded. For some species the direction of change varies between ERV submodels. For example *Larix/Pseudotsuga* PPEs decrease in submodel 3 and for *Populus* in submodels 1 and 2.

Discussion

Flowering age and forest structure

The results show that flowering age and forest structures have a marked influence on the calculation of PPEs for some taxa. The autecology of the different tree species is modulating this effect in different ways and, based on the forest inventory data from Brandenburg, we can identify three different groups. *Betula* and *Alnus* are fast growing and reach their flowering age quickly. Thus, consideration of flowering age and understory have little influence on the estimates of their abundance, while their relative PPEs may be affected due to the reduction in effective abundance of other species. A second group consists of fast growing trees that are rarely found in the understory, while their flowering age may directly affect the pollen-vegetation relationship. In this dataset, examples of this type are *Fraxinus* and *Picea*. For the third group, mainly *Fagus* and *Carpinus*, the abundance in the understory has a larger effect than the flowering age on the pollen-vegetation relationship. These different ways in which the autecology of the tree species influences their pollen-vegetation relationship would also play a role in the natural woodlands of the past that we are aiming to reconstruct. However, nearly all European forests today are heavily managed and naturally occurring age structures are likely to be skewed towards younger non-flowering trees. The harvesting age of trees is often the time when they have started to produce ample pollen and thus the strong pollen producers are removed from the forest. Thus present tree plantations and woodlands may not be good analogies for the past, and it would be preferable to estimate relative pollen productivity from flowering trees only. Regional differences in the age structure of woodlands are a potential reason for differences in PPEs between regions in previous studies, e.g. those compared by Broström et al. (2008). However, omitting trees based on their flowering age is also not without problems, as trees start to flower at different ages depending on biotic and abiotic conditions (Schütt et al. 2006). Most trees will not go from not flowering to abundant pollen production in a single year, but rather gradually increase the amount of pollen produced with age. It is also likely that a free-standing tree produces more pollen than one that grows within a dense stand (Aaby 1994).

This effect of increased pollen production with forest openings has so far not been quantified, but, if important, it would greatly hamper our ability to reconstruct small openings in the forest using pollen data.

The occurrence of species in different stories in the canopy (e.g. superstructure, matured forest) is easy to assess in the field, but is difficult, if not impossible, to gauge from remote sensing. Tree abundance for PPEs has been estimated in a number of different ways: field estimates of basal area (e.g. Jackson and Kearsley 1998), cover of individual plants, considering different forest layers and leading to values above 100 % (e.g. Soepboer et al. 2007), canopy cover as seen for one forest layer (e.g. Mazier et al. 2008) based on land-cover classifications in combination with field surveys and forest inventory, land-cover classification, and combinations with field surveys (e.g. Poska et al. 2011), remote sensing forest inventory data (Räsänen et al. 2007) or detailed forest inventory data (Theuerkauf et al. 2012 and present study).

Based on different assessments of heathland vegetation cover in western Norway, Bunting and Hjelle (2010) have shown that the way in which vegetation data are collected influences the PPEs and RSAP. We do not find differences in the RSAP, but show that PPEs are markedly influenced by the inclusion or exclusion of understory trees.

Considering the understory trees also has theoretical implications for the modeling of pollen dispersal. Tauber (1967) argued that the pollen carried to the lake through the trunk space is a significant component of the total pollen deposited at the site. However, this trunk space component is not considered in the dispersal models used here (Prentice 1985, 1988; Sugita 1993, 1994). In the present study, we omitted 10 lakes from the analysis that were situated in closed-canopy forest dominated by *Fagus*. The inclusion of this subset resulted in inflated PPEs for *Fagus* and less stable results for other taxa, indicating that the local abundance of *Fagus* around the lakes was not adequately considered in the model. The reason may be the dispersal model used in the ERV-program (Theuerkauf et al. 2012) and the large trunk space component of *Fagus* pollen in these situations. Sjögren et al. (2010) address the problem of the large trunk space component by dividing the pollen source area into different components and applying different dispersal functions. This approach seems rather *ad hoc*, as it is difficult to determine the contribution of the different components. However, this method can potentially accommodate a large trunk-space component (Filipova-Marinova et al. 2010). Pollen from understory trees may not contribute to above-canopy pollen transport in the same way as canopy trees, but it should be important in the trunk-space component (Tauber 1965). In this sense, the abundance of trees in the understory could be important near a site, while it may have little influence several

hundred meters away from the site. Thus it could be meaningful to include the understory trees within a short distance around the site and exclude them from vegetation data further afield.

RSAP

The obtained RSAP of 7 km is rather large in comparison with similar analysis based on lakes of similar size, where RSAP values of 0.8–2 km were obtained (Nielsen and Sugita 2005; Soepboer et al. 2007; Hjelle and Sugita 2012; Poska et al. 2011). Poska et al. (2011) showed that vegetation classification can influence the RSAP for lakes, as was shown for moss polsters and heath vegetation by Bunting and Hjelle (2010). We did not find this effect using the different datasets with regards to flowering age and understory trees being omitted. The reason may be that the configuration of vegetation units remained the same in all situations and the omission of trees generally only affected their abundance rather than their presence. Hjelle and Sugita (2012) found that the distribution of lake-sizes could also influence the RSAP. The restricted dataset has a lake-size distribution nearing a normal distribution, which is slightly right skewed. The full dataset has a lake size distribution with a stronger skew to the right but yields a similar RSAP. It is most likely that the result is in fact due to the distribution of vegetation types and forest species in the study area, which is a well-known factor controlling the size of the RSAP (Sugita et al. 1999; Bunting et al. 2004; Nielsen and Sugita 2005; Hellman et al. 2009). Soil substrate, and therefore nutrient and water availability in north-east Germany are linked to the glacial geomorphology of the area. The Quaternary geology of the region consists of glacial sediments several hundred meters thick, including sands, clays and tills. The extensive outwash plains often only support *Pinus* trees and are rarely used for agriculture, while much of the nutrient-rich till plains are cleared for agricultural purposes. Nutrient-rich soils also developed on terminal moraines that are too steep for agriculture and are often covered by *Fagus*-dominated forests. These three geomorphological units dominate the landscape structure and vegetation-type patch size. They may occur in their pure form over tens of kilometres or mix with other geomorphological features creating smaller-scaled vegetation patterns.

The lakes in Switzerland from which Soepboer et al. (2007) obtained an RSAP of 800 m were often surrounded by a belt of trees, and woodland patches in the surroundings have diameters of several hundred meters. The size of woodland patches in Estonia range from a few hundred meters to several kilometers and Poska et al. (2011) find a RSAP of 1,500–2,000 m. In Brandenburg extensive forests (which often stretch over more than 20 km) alternate with

extensive agricultural areas. Thus, extrapolation from the woodland patch-size versus RSAP in Switzerland and Estonia to the size of forest patches in Brandenburg may explain the large RSAP obtained. This example shows the dependency of RSAP on the patch size (Bunting et al. 2004; Hellman et al. 2009) for the selected lakes and indicates large effective patch size for the region investigated here.

PPEs

While the RSAP is markedly different from earlier studies the obtained relative PPEs agree with values obtained elsewhere (Fig. 7). The strong point of the analysis presented here is the forest inventory data, which are spatially and taxonomically precise. On the other hand the vegetation information extracted from the biotope map of Brandenburg is spatially precise but taxonomically vague. Agricultural lands are vast and, although we did use information on the proportion of different crops, we could not account for geographic differences between predominantly cereal and root crops, which exist in the area. Areas dominated by herbaceous vegetation were often distant from the sampling points so that long gradients could not be obtained, hampering the computation of PPEs. Our confidence in the obtained PPEs is high for arboreal pollen types, and for this reason we selected an arboreal taxon,

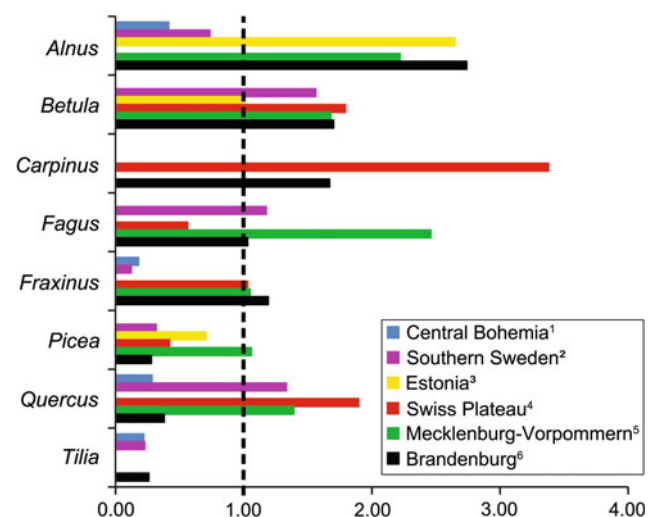


Fig. 7 PPEs for various taxa from different studies. The PPEs from Brandenburg are based on ERV 3 and on the dataset allFIDage. The PPEs from Sweden and Central Bohemia were calculated from moss polsters, the remaining studies were based on lake samples. All results were rescaled to assign a PPE of 1 (the dashed line) to the reference taxon *Pinus*. The comparison is based on original studies: 1 Abraham and Kozáková (2012); 2 Sugita et al. (1999) and Broström et al. (2004); 3 Poska et al. (2011); 4 Soepboer et al. (2007); 5 Theuerkauf et al. (2012); 6 this paper. PPE values of studies 2–4 were taken from the overview by Broström et al. (2008)

Pinus, as the reference taxon. We choose to report PPEs for herbaceous species as these differ widely between different study designs. The results presented here are based on a landscape perspective similar to the study by Poska et al. (2011) and may help evaluating published results or to design new studies. Our results indicate that the PPEs for *Avena* and *Triticum*-type are lower than for *Secale* and *Hordeum*-type, which could have implications for reconstructions of past cultural landscapes, although the exact values reported here have large uncertainties, as seen for example by the large differences between ERV submodels.

Our estimates for *Alnus* agree well with studies based on lakes (Poska et al. 2011), while studies using moss samples tend to produce much lower values (Southern Sweden, Broström et al. 2004; Central Bohemia, Abraham and Kozáková 2012). This may again be a result of the trunk-space component, which is generally not considered in the pollen dispersal model. *Alnus* is often found on the lake shore where a large amount of pollen may be carried in the trunk space, or simply drop into the lake, while moss samples from upland vegetation are generally distant from this tree species and thus collect *Alnus* pollen that is transported by the wind above the canopy. The good agreement for the PPE of *Betula* relative to *Pinus* between studies is encouraging, especially as *Betula* is often mixed in with other trees or occurs near the lake shore and it is thus difficult to estimate its abundance.

Few studies have obtained a PPE for *Carpinus* and our result agrees with Soepboer et al. (2007) in that its relative pollen production is higher than *Pinus*, although the relative amount differs greatly between the two studies. This may in part be due to the high uncertainty in the PPE for *Pinus* obtained for Switzerland (Soepboer et al. 2007). Our results show that the PPE of *Carpinus* depends strongly on whether understory trees are included in the vegetation estimate (Table 4), a factor which was not or only partly considered in several previous studies. More studies have estimated the PPE for *Fagus* with varying results. As discussed earlier, we suppose that the trunk-space transport of *Fagus* pollen may have a strong influence at sites within *Fagus*-dominated forest. This may contribute to the high PPE estimated by Theuerkauf et al. (2012) for the area just north of this study (calculated by the ERVv1.2.3. software). The value obtained here compares well with that estimated in southern Sweden, where, as in Brandenburg, both *Pinus* and *Fagus* are abundant forest trees. Also the PPE for *Picea* compares well to the estimate from southern Sweden, although the *Picea* trees in Brandenburg are planted and the distribution considered natural is situated just to the south of the study area. *Larix* and *Pseudotsuga* are planted widely in Brandenburg and were thus considered in the analysis. As the two trees cannot be differentiated by their pollen type, the PPE is difficult to interpret.

The values obtained for *Quercus* are surprisingly low and similar values have only been obtained from Central Bohemia (Abraham and Kozáková 2012). The dataset has a good spread of *Quercus* tree and pollen abundance, which gives us confidence in the results. In recent years many areas of *Quercus* trees in Brandenburg have been severely damaged by insects (particularly the moth *Thaumetopoea processionea*) and/or the fungus *Microsphaera alphitoides* (Möller et al. 2010) which can completely defoliate the tree, influencing its resource allocation and potentially reducing if not stopping the production of pollen. Also the age structure of *Quercus* in Brandenburg is skewed towards younger trees which may not produce the same amount of pollen as an abundance of older trees. While these factors would explain a somewhat lower PPE, the difference compared to the estimates from Switzerland is about threefold and thus difficult to explain by these factors alone.

The PPE for *Tilia cordata* compares well with the value for *Tilia* estimated in Southern Sweden (Sugita et al. 1999). *Tilia cordata* is the more abundant species in our dataset, while *T. platyphyllos* is also present. ERV model runs combining both pollen types and trees yield similar PPEs and thus we suggest that the value presented here may be appropriate for both species. However, *T. platyphyllos* is rare in the region and we thus restricted the final analysis to *T. cordata*.

It is desirable that the relationship between pollen and vegetation should be as good as possible for the reference taxon, because all the calculated PPEs depend on this taxon. We propose to use PPEs from ERV submodel 3 for vegetation reconstruction, because *Pinus* shows the best fit. Submodel 3 also produced lower likelihood function scores than the other submodels (Fig. 5), indicating a generally better fit to the data across all taxa. Based on the insights gained when working with the data, we recommend the further usage of the results from ERV submodel 3, based on the inclusion of all flowering trees, i.e. considering the effect of flowering age.

Conclusion

Both forest structure and flowering age have strong effects on the calculation of PPEs for most tree species, which should be considered when estimating PPEs or reconstructing vegetation. Forest structure is more important for slow growing trees like *Fagus* and *Carpinus*, while flowering age is most important for fast growing trees like *Fraxinus* and *Picea*, where flowering age is reached late. Based on this dataset, these effects may cause variations in PPEs in the order of up to 100 % for trees that are slow growing and/or reach their flowering age late.

Larger differences in PPEs between regions will most likely have different reasons, as will differences observed for trees that reach their flowering age early.

Trees growing at or near the lake shore contribute a large amount of pollen to the lake through the trunk-space component of pollen transport. This component is generally not considered when estimating PPEs, but could have a large effect and may thus be another factor explaining the differences between studies.

The large RSAP of 7 km is consistent with the landscape structure consisting of large units shaped by ice-marginal processes during the last glaciation. The resulting differences in soil substrates and geomorphology are reflected in different land use today, and it would also have supported different forest types in the past.

This study adds to the growing dataset of PPEs for Europe and thus improves our ability to reconstruct past vegetation cover.

Acknowledgments We thank Ralf Köhler from the Landesumweltamt in Brandenburg for the authorization to do our fieldwork as well as Sabine Busch from Landesbetrieb Forst Brandenburg (LFB). We would like to thank Martin Theuerkauf for support in handling of the forest inventory data and long and good discussions. We thank Shinya Sugita for providing us with the unpublished software ERV-Analysis 1.2.3 and a critical discussion of the results. We also thank Jörg Christiansen for technical support. We thank the forest authorities of Brandenburg and Mecklenburg-Vorpommern for providing us with the forest data, particularly Konrad Müller from LFB, Potsdam. We also like to thank Simon Connor and an anonymous referee for helpful comments upon an earlier draft of this manuscript. This study was funded by the German Research Foundation (DFG, GI 732/1-1).

Open Access This article is distributed under the terms of the Creative Commons Attribution License which permits any use, distribution, and reproduction in any medium, provided the original author(s) and the source are credited.

References

- Aaby B (1994) NAP percentages as an expression of cleared areas. *Paläoklimaforschung* 12:13–27
- Abraham V, Kozáková R (2012) Relative pollen productivity estimates in the modern agricultural landscape of Central Bohemia (Czech Republic). *Rev Palaeobot Palynol* 179:1–12
- Bennett KD, Willis KJ (2001) Pollen. In: Smol JP, Birks HJB, Last WM (eds) *Tracking environmental change using lake sediments*, vol 3., Terrestrial, algal and siliceous indicators. Kluwer, Dordrecht, pp 5–32
- Beug H-J (2004) *Leitfaden der Pollenbestimmung*. Pfeil, München
- Broström A, Sugita S, Gaillard MJ (2004) Pollen productivity estimates for reconstruction of past vegetation cover in the cultural landscape of southern Sweden. *Holocene* 14:371–384
- Broström A, Nielsen B, Gaillard M-J, Hjelle K, Mazier F, Binney H, Bunting MJ, Fyfe R, Meltsov V, Poska A, Räsänen S, Soepboer W, Von Stedingk H, Suutari H, Sugita S (2008) Pollen productivity estimates of key European plant taxa for quantitative reconstruction of past vegetation: a review. *Veget Hist Archaeobot* 17:461–478
- Bunting MJ, Hjelle KL (2010) Effect of vegetation data collection strategies on estimates of relevant source area of pollen (RSAP) and relative pollen productivity estimates (relative PPE) for non-arboreal taxa. *Veget Hist Archaeobot* 19:365–374
- Bunting MJ, Middleton R (2005) Modelling pollen dispersal and deposition using HUMPOL software, including simulating wind-roses and irregular lakes. *Rev Palaeobot Palynol* 134:185–196
- Bunting MJ, Gaillard M-J, Sugita S, Middleton R, Broström A (2004) Vegetation structure and pollen source area. *Holocene* 14: 651–660
- Bunting MJ, Armitage R, Binney HA, Waller M (2005) Estimates of “relative pollen productivity” and “relevant source area of pollen” for major tree taxa in two Norfolk (UK) woodlands. *Holocene* 15:459–465
- Davis MB (1963) On the theory of pollen analysis. *Am J Sci* 261: 897–912
- Davis MB (2000) Palynology after Y2K—understanding the source area of pollen in sediments. *Ann Rev Earth Planet Sci* 28:1–18
- Eisenhut G (1961) *Untersuchung über die Morphologie und Ökologie der Pollenkörner heimischer und fremdländischer Waldbäume*. Parey, Hamburg
- Engel J (2010) Brandenburg–Kiefernland in Wandel. *MILAktuell* 2:29–30
- Filipova-Marinova MV, Kvavadze EV, Connor SE, Sjögren P (2010) Estimating absolute pollen productivity for some European tertiary-relict taxa. *Veget Hist Archaeobot* 19:351–364
- Gaillard MJ (2007) Pollen methods and studies—archaeological applications. In: Elias SA (ed) *Encyclopedia of quaternary science*, vol 3. Elsevier, Amsterdam, pp 2575–2595
- Gaillard M-J, Sugita S, Bunting MJ, Middleton R, Broström A, Caseldine C, Giesecke T, Hellman SEV, Hicks S, Hjelle K, Langdon C, Nielsen AB, Poska A, Von Stedingk H, Veski S, POLLANDCAL Members (2008) The use of modelling and simulation approach in reconstructing past landscapes from fossil pollen data: a review and results from the POLLANDCAL network. *Veget Hist Archaeobot* 17:419–443
- Gaillard M-J, Sugita S, Mazier F, Trondman A-K, Broström A, Hickler T, Kaplan JO, Kjellström E, Kokfelt U, Kuneš P, Lemmen C, Miller P, Olofsson J, Poska A, Rundgren M, Smith B, Strandberg G, Fyfe R, Nielsen AB, Alenius T, Balakauskas L, Barnekow L, Birks HJB, Bjune A, Björkman L, Giesecke T, Hjelle KL, Kalnina L, Kangur M, van der Knaap WO, Koff T, Lagerås P, Latalowa M, Leydet M, Lechterbeck J, Lindbladh M, Odgaard BV, Peglar S, Segerström U, Von Stedingk H, Seppä H (2010) Holocene land-cover reconstructions for studies on land cover-climate feedbacks. *Clim Past* 6:483–499
- Giesecke T, Fontana SL (2008) Revisiting pollen accumulation rates from Swedish lake sediments. *Holocene* 18:293–305
- Gregory PH (1973) *The microbiology of the atmosphere*. Leonard Hill, Aylesbury
- Haller KE, Fickler H-H (1955) *Waldbäume, Sträucher und Zwerg-holzgewächse*. Winter, Heidelberg
- Hellman S, Gaillard M-J, Bunting MJ, Mazier F (2009) Estimating the relevant source area of pollen in the past cultural landscapes of southern Sweden—a forward modelling approach. *Rev Palaeobot Palynol* 153:259–271
- Hjelle KL (1998) Herb pollen representation in surface moss samples from mown meadows and pastures in western Norway. *Veget Hist Archaeobot* 7:79–96
- Hjelle KL, Sugita S (2012) Estimating pollen productivity and relevant source area of pollen using lake sediments in Norway: how does lake size variation affect the estimates? *Holocene* 22:313–324
- Jackson ST, Kearsley JB (1998) Quantitative representation of local forest composition in forest-floor pollen assemblages. *J Ecol* 86:474–490

- Liedtke H, Marcinek J (2002) *Physische Geographie Deutschlands*. Klett-Perthes, Gotha
- Linke C, Grimmert S, Hartmann I, Reinhardt K (2010) Auswertung regionaler Klimamodelle für das Land Brandenburg. Fachbeiträge des Landesumweltamtes Heft Nr. 113. http://www.mugv.brandenburg.de/cms/media.php/lbm1.a.2334.de/i_fb113.pdf. Accessed 27 February 2012
- Mazier F, Brostöm A, Gaillard MJ, Sugita S, Vittoz P, Buttler A (2008) Pollen productivity estimates and relevant source area of pollen for selected plant taxa in a pasture woodland landscape of the Jura Mountains (Switzerland). *Veget Hist Archaeobot* 17: 479–495
- Miller PA, Giesecke T, Hickler T, Bradshaw RHW, Smith B, Seppä H, Valdes PJ, Sykes MT (2008) Exploring climatic and biotic controls on Holocene vegetation change in Fennoscandia. *J Ecol* 96:247–259
- MLUV (2009) *Agrarbericht 2009 zur Land- und Ernährungswirtschaft des Landes Brandenburg*. Ministerium für Ländliche Entwicklung, Umwelt und Verbraucherschutz des Landes Brandenburg (MLUV). Landesamt für Verbraucherschutz, Landwirtschaft und Flurneuordnung. http://www.mil.brandenburg.de/sixcms/media.php/4055/Agrarbericht_2009.pdf. Accessed 27 February 2012
- Möller K, Heydeck P, Hielscher K, Engelmann A, Wenk M, Schulz P-M, Dahms C, Born B, Dietz H, Braunschweig A (2010) *Waldschutzbericht 2010. Jahresbericht der Hauptstelle für Waldschutz*. Landeskompentenzentrum Forst Eberswalde. <http://forst.brandenburg.de/sixcms/media.php/4055/ws2010.pdf>. Accessed 07 March 2012
- Moore PD, Webb JA, Collinson ME (1991) *Pollen analysis*. Blackwell Scientific, Oxford
- Nielsen AB (2004) Modelling pollen sedimentation in Danish lakes at c. A.D. 1800: an attempt to validate the POLLSCAPE model. *J Biogeogr* 31:1693–1709
- Nielsen AB, Sugita S (2005) Estimating relevant source area of pollen for small Danish lakes around AD 1800. *Holocene* 15: 1006–1020
- Nielsen AB, Giesecke T, Theuerkauf M, Feeser I, Behre K-E, Beug H-J, Chen S-H, Christiansen J, Dörfler W, Endtmann E, Jahns S, De Klerk P, Kühl N, Latalowa M, Odgaard BV, Rasmussen P, Stockholm JR, Voigt R, Wiethold J, Wolters S (2012) Quantitative reconstructions of changes in regional openness in north-central Europe reveal new insights into old questions. *Quat Sci Rev* 47:131–149
- Pardoe HS, Giesecke T, Van der Knaap WO, Svitavská-Svobodová H, Kvavadze EV, Panajiotidis S, Gerasimidis A, Pidek IA, Zimny M, Swieta-Musznicka J, Latalowa M, Noryskiewicz AM, Bozilova E, Tonkov S, Filipova-Marinova MV, Van Leeuwen JFN, Kalnina L (2010) Comparing pollen spectra from modified Tauber traps and moss samples: examples from a selection of woodlands across Europe. *Veget Hist Archaeobot* 19:271–283
- Parsons RW, Prentice IC (1981) Statistical approaches to R-values and pollen–vegetation relationship. *Rev Palaeobot Palynol* 32: 127–152
- Poska A, Meltsov V, Sugita S, Vassiljev J (2011) Relative pollen productivity estimates of major anemophilous taxa and relevant source area of pollen in a cultural landscape of the hemi-boreal forest zone (Estonia). *Rev Palaeobot Palynol* 167:30–39
- Prentice IC (1985) Pollen representation, source area, and basin size: toward a unified theory of pollen analysis. *Quat Res* 23:76–86
- Prentice IC (1988) Records of vegetation in time and space: the principles of pollen analysis. In: Huntley B, Webb TH (eds) *Vegetation history*. Kluwer, Dordrecht, pp 17–42
- Prentice IC, Parsons RW (1983) Maximum likelihood linear calibration of pollen spectra in terms of forest composition. *Biometrics* 39:1051–1057
- Räsänen S, Suutari H, Nielsen AB (2007) A step further towards quantitative reconstruction of past vegetation in Fennoscandian boreal forests: pollen productivity estimates for six dominant taxa. *Rev Palaeobot Palynol* 146:208–220
- Renberg I (1991) The HON-Kajak sediment corer. *J Paleolimnol* 6: 167–170
- Rispens JA (2003) Der Nadelbaumtypus–Schritte zu einem imaginativen Baumverständnis. *Elemente der Naturwissenschaft* 79: 51–77
- Schröck O (1949) Die Vererbung der Frühblüte der Kiefer. *Der Züchter* 19:247–254
- Schütt P, Weisgerber H, Schuck H-J, Lang U, Stimm B, Roloff A (2006) *Enzyklopädie der Laubbäume*. Nikol, Hamburg
- Sjögren P, Connor SE, Van der Knaap WO (2010) The development of composite pollen-dispersal functions for estimating absolute pollen productivity in the Swiss Alps. *Veget Hist Archaeobot* 19:341–349
- Soepboer W, Sugita S, Lotter AF, Van Leeuwen JFN, Van der Knaap WO (2007) Pollen productivity estimates for quantitative reconstruction of vegetation cover on the Swiss Plateau. *Holocene* 17:1–13
- Stinglwagner G, Haseder I, Erlbeck R (2005) *Das Kosmos Wald- und Forstlexikon*. Kosmos, Stuttgart
- Sugita S (1993) A model of pollen source area for an entire lake surface. *Quat Res* 39:239–244
- Sugita S (1994) Pollen representation of vegetation in quaternary sediments: theory and method in patchy vegetation. *J Ecol* 82: 881–897
- Sugita S (2007a) Theory of quantitative reconstruction of vegetation I: pollen from large sites REVEALS regional vegetation composition. *Holocene* 17:229–241
- Sugita S (2007b) Theory of quantitative reconstruction of vegetation II: all you need is LOVE. *Holocene* 17:243–257
- Sugita S, Gaillard MJ, Broström A (1999) Landscape openness and pollen records: a simulation approach. *Holocene* 9:409–421
- Sugita S, Hicks S, Sormunen H (2010) Absolute pollen productivity and pollen–vegetation relationships in northern Finland. *J Quat Sci* 25:724–736
- Tauber H (1965) Differential pollen dispersion and the interpretation of pollen diagrams. *Danmarks Geologiske Undersøgelse. II Række* 89:1–69
- Tauber H (1967) Investigations of the mode of pollen transfer in forested areas. *Rev Palaeobot Palynol* 3:277–286
- Theuerkauf M, Kuparinen A, Joosten H (2012) Pollen productivity estimates strongly depend on assumed pollen dispersal. *Holocene*. doi:10.1177/0959683612450194
- Umweltbundesamt, DLR-DFD (2004) *CORINE Land Cover 2000. Daten zur Bodenbedeckung - Deutschland*. <http://www.corine.dfd.dlr.de>
- Von Stedingk H, Fyfe R, Allard A (2008) Pollen productivity estimates from the forest–tundra ecotone in west-central Sweden: implications for vegetation reconstruction at the limits of the boreal forest. *Holocene* 18:323–332